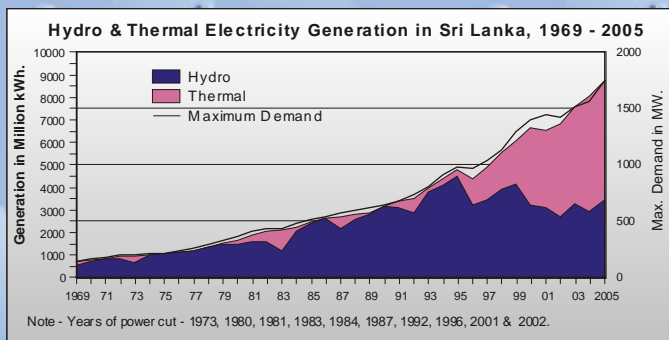


STATISTICAL DIGEST 2005



CEYLON ELECTRICITY BOARD

Statistical Unit
Commercial & Corporate Branch
Distribution Region - 3
P.O. Box 540, Colombo - 2, Sri Lanka.
Telefax: 94-1-2449572

SUMMARY STATISTICS - 2005

| | Units | 2004 | 2005 | Annual Percentage Increase |
|-------------------------------------------------------|--------------|-----------|-----------|----------------------------|
| Number of Power Stations (with PPP & Hired) | No. | 79 | 81 | 2.5% |
| Installed Capacity (with PPP & Hired) | MW. | 2499 | 2411 | -3.5% |
| Maximum Demand (with PPP & Hired) | MW. | 1563 | 1748 | 11.8% |
| Gross Generation (with PPP & Hired) | GWh. | 8043 | 8769 | 9.0% |
| Self Generation (eligible + not eligible for payment) | Gwh. | 115 | - | - |
| System Energy Loss (exclud. Self Gen.) | % | 17.11 | 17.27 | 0.16% |
| Gross Units Sold (exclud. Self Gen.) | GWh. | 6,667 | 7,255 | 8.8% |
| Average Sale Price per Unit (without VAT) | Rs/kWh | 7.66 | 7.71 | 0.6% |
| Revenue from billed Sales(exclud. Self Gen.) | m.Rs. | 51,076 | 55,927 | 9.5% |
| Value Added Tax (for billed sales) | m.Rs. | 7,359 | 8,105 | 10.1% |
| Consumer Accounts | No. | 3,206,892 | 3,396,047 | 5.9% |
| % of Household Electrified | % | 73.4(a) | 76.7(a) | 3.3% |
| System Load Factor | % | 58.6 | 57.3 | -1.3% |
| Total Employed | No. | 13,418 | 14,568 | 8.6% |
| Capital Investments | m.Rs. | 11,236 | 11,220 | -0.1% |
| Net Fixed Assets in Operation (average) | m.Rs. | 227,441 | 256,120 | 12.6% |
| Rate of Return on fixed assets | % | -5.11* | -1.15* | |
| Debt Service Ratio | | -0.15* | 1.07 | |
| No. of Consumers per Employee | No./Employee | 239 | 233 | -2.5% |
| Av. Elect:Consumption per Capita | kWh/Person | 348 | 369 | 5.9% |
| Av. Elect:Consumption per Consumer in | | | | |
| Domestic Sector | kWh/Consumer | 767 | 804 | 4.8% |
| Commercial Sector | kWh/Consumer | 3,419 | 3,549 | 3.8% |
| Industrial Sector | kWh/Consumer | 69,379 | 71,908 | 3.6% |
| No.of Consumers per length of dist.line | No./ km. | 32.7 | 32.6 | -0.4% |
| Electricity Elasticity (w.r.t. GDP) | | 1.4 | 1.5 | |
| Total Energy Consumption in Sri Lanka | kTOE | 7,270 | | |
| Per Capita Energy Consumption in Sri Lanka | TOE | 0.37 | | |
| Share of Elect. to Total Energy Supply | % | 7.7 | | |

* - Tariff effective during 2004 & 2005 being below cost.

(a) - Estimated.

Note:- (1) P.P.P. refers to Private Power Purchase.

(2) All Financial data are Provisional.

GENERATION STATISTICS

| Type of Power Stations | No. of Power Stations | | | Installed Capacity in MW. | | |
|------------------------|-----------------------|-----------|-------------|---------------------------|-------------|--------------|
| | 2004 | 2005 | % Increase | 2004 | 2005 | % Increase |
| | | | 2004/05 | | | 2004/05 |
| C.E.B. - Hydro | 16 | 16 | 0.0% | 1207 | 1207 | 0.0% |
| - Thermal | 7 | 6 | -14.3% | 573 | 548 | -4.4% |
| - Wind | 1 | 1 | 0.0% | 3 | 3 | 0.0% |
| P.P.P. - Hydro-Small # | 38 | 48 | 26.3% | 74 | 86 | 15.7% |
| - Thermal | 8 | 10 | 25.0% | 452 | 567 | 25.5% |
| Hired - Thermal | 9 | - | - | 190 | - | - |
| Total | 79 | 81 | 2.5% | 2499 | 2411 | -3.5% |

- with Waste Heat, Solar, Biomass & Dendro Power Plants.

- Note:-
1. PPP (Thermal) - Koolair in KKS (Jaffna) and Chunnakam station were not connected to the National Grid.
 2. Hired Plants were terminated at the end of October in 2004 except Chunnakam (20 MW).

| Ownership & Source | Gross Generation in Gwh | | | Percentage of Total | |
|-------------------------|-------------------------|-------------|-------------|---------------------|---------------|
| | 2004 | 2005 | % increase | 2004 | 2005 |
| C.E.B. - Hydro | 2755 | 3173 | 15.2% | 34.2% | 36.2% |
| - Thermal | 2507 | 2162 | -13.8% | 31.2% | 24.7% |
| - Wind | 2.7 | 2.4 | -8.4% | 0.0% | 0.0% |
| P.P.P. - Hydro-Small # | 206 | 280 | 36.1% | 2.6% | 3.2% |
| - Thermal | 2064 | 3152 | 52.7% | 25.7% | 35.9% |
| Hired - Thermal | 509 | - | - | 6.3% | - |
| Total Generation | 8043 | 8769 | 9.0% | 100.0% | 100.0% |

Av. Daily Generation - GWh/day 22.0 24.0 9.3%

Self Generation

| Under Incentive Payment in Gwh | 2004 | 2005 |
|------------------------------------|------|------|
| Eligible for Incentive Payment | 47 | - |
| Not Eligible for Incentive Payment | 67 | - |

(Defined Period for Incentive - Jan. To June in 2004)

Maximum Demand in MW.

| | 2004 | 2005 | % Increase |
|-------|---------|----------|------------|
| Day | 1104.6 | 1206.7 | 9.2% |
| Night | 1563.4* | 1748.2** | 11.8% |

* - At Monday 6th Dec. 2004 ** - At Wednesday 25th May '05

Installed Capa. by Source in MW.

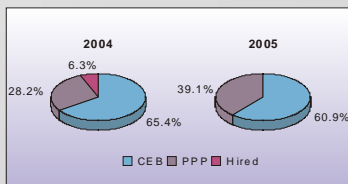
| | 2004 | 2005 |
|--------------|-------------|-------------|
| Hydro | 1282 | 1293 |
| Thermal | 1215 | 1115 |
| Wind | 3 | 3 |
| Total | 2499 | 2411 |

Gross Gen. by Source in Gwh

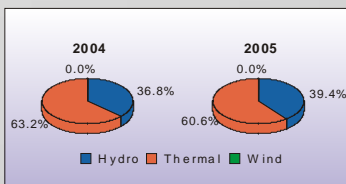
| | 2004 | 2005 |
|--------------|-------------|-------------|
| Hydro | 2960 | 3453 |
| Thermal | 5080 | 5314 |
| Wind | 3 | 2 |
| Total | 8043 | 8769 |

Hydro Reservoir Capacity in Gwh 1259 1259

Generation by Ownership - 2004 & 2005



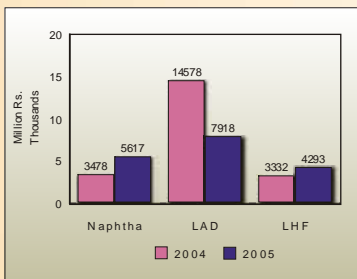
Generation by Source - 2004 & 2005



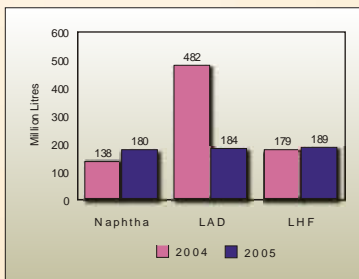
DATA ON FUEL USED FOR THERMAL GENERATION

| Name of Power Station | Type of Fuel | Fuel Cost in m. Rs. | | | Fuel Used in m. Litres | | |
|-------------------------|--------------|---------------------|--------------|--------------------|------------------------|------------|--------------------|
| | | 2004 | 2005 | % increase 2004/05 | 2004 | 2005 | % increase 2004/05 |
| K.P.S.(small GT) | L.A.D. | 2000 | 489 | -75.5% | 70 | 12 | -83.1% |
| K.P.S.(new GT) | L.A.D. | 4384 | 4094 | -6.6% | 145 | 94 | -35.1% |
| K.P.S.(C.Cy.) | L.A.D. | 3989 | 3231 | -19.0% | 129 | 75 | -42.3% |
| | Naphtha | 3478 | 5617 | 61.5% | 138 | 180 | 30.1% |
| SP.P.S.(Diesel) - A | L.H.F. | 1290 | 1718 | 33.2% | 69 | 75 | 8.3% |
| | L.A.D. | 39 | 54 | 39.5% | 1 | 2 | 20.5% |
| SP.P.S.(Diesel) - B | L.H.F. | 2043 | 2574 | 26.0% | 110 | 114 | 3.8% |
| | L.A.D. | 26 | 37 | 44.2% | 1 | 1 | 27.0% |
| Hired Plants | L.A.D. | 4105 | - | - | 134 | - | - |
| Small Diesel Generators | L.A.D. | 36 | - | - | 1 | - | - |
| Chunnakam - Diesel | L.A.D. | - | 13 | - | - | 0.2 | - |
| TOTAL | | 21389 | 17828 | -16.6% | 799 | 552 | -30.9% |

Fuel Cost For Thermal Generation C.E.B.

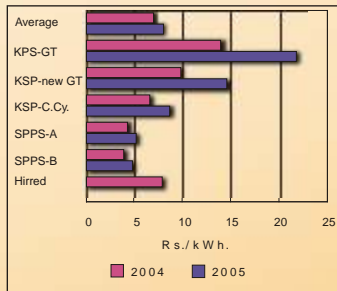


Fuel Used For Thermal Generation C.E.B.



Average Fuel Cost per Unit for Thermal Generation by Power Station in Rs/kWh

| Name of Power Station | 2004 | 2005 | % increase 2004/05 |
|----------------------------|-------------|-------------|--------------------|
| Average for Thermal | 7.09 | 8.25 | 16.3% |
| K.P.S.(small GT) | 14.14 | 22.02 | 55.7% |
| K.P.S.(new GT) | 10.00 | 14.78 | 47.9% |
| K.P.S. (C.Cy.) | 6.74 | 8.79 | 30.4% |
| SP.P.S.(Diesel) - A | 4.38 | 5.40 | 23.4% |
| SP.P.S.(Diesel) - B | 4.04 | 4.95 | 22.7% |
| Hired Plants | 8.06 | - | - |



ELECTRICITY SALES IN GWh(million kWh) BY PROVINCES

| Province | C.E.B. | Percentage Increase | C.E.B. | Percentage of Total | Monthly Av.Sales kWh/Cons. |
|-------------------------|-------------|---------------------|-------------|---------------------|----------------------------|
| | 2005 | 2004/05 | 2005 | 2005 | 2005 |
| Colombo City | 934 | 8.7% | 1015 | 14.0% | 622 |
| North Western | 587 | 9.1% | 640 | 8.8% | 124 |
| North Central | 194 | 10.3% | 214 | 2.9% | 87 |
| Northern | 99 | 15.7% | 114 | 1.6% | 88 |
| Region - 1 Total | 1813 | 9.4% | 1983 | 27.3% | 188 |
| Western-North | 1421 | 8.7% | 1544 | 21.3% | 301 |
| Central | 439 | 7.0% | 469 | 6.5% | 94 |
| Eastern | 241 | 16.0% | 280 | 3.9% | 111 |
| Region - 2 Total | 2101 | 9.2% | 2294 | 31.6% | 182 |
| Western-South II | 894 | 6.0% | 948 | 13.1% | 302 |
| Uva | 247 | 8.8% | 269 | 3.7% | 85 |
| Sabaragamuwa | 340 | 9.3% | 371 | 5.1% | 98 |
| Region - 3 Total | 1481 | 7.2% | 1588 | 21.9% | 158 |
| Western-South I | 700 | 10.8% | 776 | 10.7% | 353 |
| Southern | 571 | 7.6% | 614 | 8.5% | 115 |
| Region - 4 Total | 1271 | 9.4% | 1390 | 19.2% | 185 |
| TOTAL | 6667 | 8.8% | 7255 | 100.0% | 178 |

Note - Provincial Data are given according to Re-organization of Distribution Divisions in 2002 & 2005.

ELECTRICITY SALES IN GWh(million kWh) BY TARIFF

| Tariff | C.E.B. | Percentage Increase | C.E.B. | Percentage of Total | Monthly Av.Sales kWh/Cons. |
|----------------------------|-------------|---------------------|-------------|---------------------|----------------------------|
| | 2004 | 2004/05 | 2005 | 2005 | 2005 |
| Domestic | 2166 | 10.9% | 2403 | 33.1% | 67 |
| Religious | 38 | 7.8% | 41 | 0.6% | 168 |
| General Total | 1132 | 10.8% | 1254 | 17.3% | 296 |
| Small | 614 | 9.6% | 673 | 9.3% | 160 |
| Medium | 385 | 14.3% | 440 | 6.1% | 17,323 |
| Large | 133 | 6.5% | 142 | 2.0% | 274,328 |
| Industrial Total | 2266 | 7.9% | 2446 | 33.7% | 5,992 |
| Small | 157 | 5.6% | 166 | 2.3% | 456 |
| Small T.D. | 0.17 | -0.6% | 0.17 | 0.002% | 2,375 |
| Medium | 953 | 10.7% | 1055 | 14.5% | 29,042 |
| Medium T.D. | 287 | -6.6% | 268 | 3.7% | 42,731 |
| Large | 635 | 16.9% | 742 | 10.2% | 589,198 |
| Large T.D. | 234 | -8.5% | 215 | 3.0% | 483,223 |
| Bulk Supply to LECO | 981 | 4.7% | 1027 | 14.2% | 2,313,390 |
| L1 - L.T.Supply | 1.2 | -5.8% | 1.1 | 0.02% | 91,333 |
| L2 -11kV & above | 980 | 4.7% | 1026 | 14.1% | 2,375,116 |
| Street Lighting | 83 | -0.3% | 83 | 1.1% | 6,937,750 |
| TOTAL | 6667 | 8.8% | 7255 | 100.0% | 178 |

Note:- Excludes Self Generation.

NO.OF CONSUMER ACCOUNTS BY PROVINCES

| Province | C.E.B. | Increase in Accounts 2005 | Percentage Increase 2004/05 | C.E.B. | Percentage of Total 2005 |
|-------------------------|------------------|---------------------------------|-----------------------------------|------------------|--------------------------------|
| | 2004 | | | 2005 | |
| Colombo City | 132,760 | 3,220 | 2.4% | 135,980 | 4.0% |
| North Western | 402,954 | 25,479 | 6.3% | 428,433 | 12.6% |
| North Central | 189,530 | 16,000 | 8.4% | 205,530 | 6.1% |
| Northern | 98,065 | 10,442 | 10.6% | 108,507 | 3.2% |
| Region - 1 Total | 823,309 | 55,141 | 6.7% | 878,450 | 25.9% |
| Western-North | 407,791 | 19,904 | 4.9% | 427,695 | 12.6% |
| Central | 393,937 | 20,443 | 5.2% | 414,380 | 12.2% |
| Eastern | 195,744 | 14,693 | 7.5% | 210,437 | 6.2% |
| Region - 2 Total | 997,472 | 55,040 | 5.5% | 1,052,512 | 31.0% |
| Western-South II | 246,317 | 14,800 | 6.0% | 261,117 | 7.7% |
| Uva | 249,103 | 13,620 | 5.5% | 262,723 | 7.7% |
| Sabaragamuwa | 295,400 | 19,015 | 6.4% | 314,415 | 9.3% |
| Region - 3 Total | 790,820 | 47,435 | 6.0% | 838,255 | 24.7% |
| Western-South I | 174,196 | 8,941 | 5.1% | 183,137 | 5.4% |
| Southern | 421,094 | 22,598 | 5.4% | 443,692 | 13.1% |
| Region - 4 Total | 595,290 | 31,539 | 5.3% | 626,829 | 18.5% |
| TOTAL | 3,206,892 | 189,155 | 5.9% | 3,396,047 | 100.0% |

Note - Provincial Data are given according to Re-organization of Distribution Divisions in 2002 & 2005.

NO.OF CONSUMER ACCOUNTS BY TARIFF

| Tariff | C.E.B. | Increase in Accounts 2005 | Percentage Increase 2004/05 | C.E.B. | Percentage of Total 2005 |
|----------------------------|------------------|---------------------------------|-----------------------------------|------------------|--------------------------------|
| | 2004 | | | 2005 | |
| Domestic | 2,823,654 | 164,569 | 5.8% | 2,988,223 | 88.0% |
| Religious | 19,508 | 857 | 4.4% | 20,365 | 0.6% |
| General Total | 331,022 | 22,379 | 6.8% | 353,401 | 10.4% |
| Small | 329,003 | 22,239 | 6.8% | 351,242 | 10.3% |
| Medium | 1,973 | 143 | 7.2% | 2,116 | 0.1% |
| Large | 46 | -3 | -6.5% | 43 | negli.% |
| Industrial Total | 32,666 | 1,354 | 4.1% | 34,020 | 1.0% |
| Small | 29,063 | 1,258 | 4.3% | 30,321 | 0.9% |
| Small T.D. | 6 | 0 | 0.0% | 6 | 0.0% |
| Medium | 2,892 | 136 | 4.7% | 3,028 | 0.1% |
| Medium T.D. | 568 | -45 | -7.9% | 523 | 0.02% |
| Large | 98 | 7 | 7.1% | 105 | negli.% |
| Large T.D. | 39 | -2 | -5.1% | 37 | negli.% |
| Bulk Supply to LECO | 41 | -4 | -9.8% | 37 | negli.% |
| L1 - L.T.Supply | 1 | 0 | 0.0% | 1 | negli.% |
| L2 - 11kV & above | 40 | -4 | -10.0% | 36 | negli.% |
| Street Lighting | 1 | 0 | 0.0% | 1 | 0.0% |
| TOTAL | 3,206,892 | 189,155 | 5.9% | 3,396,047 | 100.0% |

Note:- Street Lighting Accounts are accounted as one for 2004 & 2005.

Negli. - negligible.

REVENUE FROM ELECTRICITY SALES IN m.Rs. BY PROVINCES

| Province | C.E.B. | Percentage Increase | C.E.B. | Percentage of Total | Ave.Price |
|-------------------------|---------------|---------------------|---------------|---------------------|--------------|
| | 2004 | 2004/05 | 2005 | 2005 | Rs./kWh 2005 |
| Colombo City | 9,829 | 9.6% | 10,771 | 19.3% | 10.61 |
| North Western | 4,179 | 9.8% | 4,588 | 8.2% | 7.17 |
| North Central | 1,351 | 10.2% | 1,489 | 2.7% | 6.97 |
| Northern | 701 | 16.2% | 814 | 1.5% | 7.14 |
| Region - 1 Total | 16,060 | 10.0% | 17,662 | 31.6% | 8.91 |
| Western-North | 10,471 | 9.6% | 11,481 | 20.5% | 7.44 |
| Central | 3,132 | 7.5% | 3,367 | 6.0% | 7.17 |
| Eastern | 1,669 | 18.4% | 1,976 | 3.5% | 7.05 |
| Region - 2 Total | 15,272 | 10.2% | 16,824 | 30.1% | 7.34 |
| Western-South II | 6,563 | 7.1% | 7,028 | 12.6% | 7.41 |
| Uva | 1,764 | 8.3% | 1,910 | 3.4% | 7.10 |
| Sabaragamuwa | 2,440 | 9.2% | 2,665 | 4.8% | 7.18 |
| Region - 3 Total | 10,767 | 7.8% | 11,603 | 20.7% | 7.31 |
| Western-South I | 5,071 | 10.6% | 5,611 | 10.0% | 7.23 |
| Southern | 3,906 | 8.3% | 4,228 | 7.6% | 6.88 |
| Region - 4 Total | 8,977 | 9.6% | 9,839 | 17.6% | 7.08 |
| TOTAL | 51,076 | 9.5% | 55,927 | 100.0% | 7.71 |

Note - Provincial Data are given according to Re-organization of Distribution Divisions in 2002 & 2005.

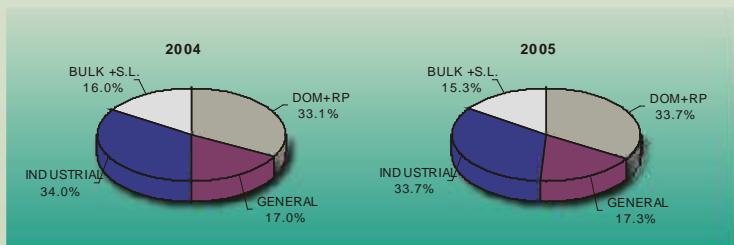
REVENUE FROM ELECTRICITY SALES IN m.Rs. BY TARIFF

| Tariff | C.E.B. | Percentage Increase | C.E.B. | Percentage of Total | Ave.Price |
|----------------------------|---------------|---------------------|---------------|---------------------|--------------|
| | 2004 | 2004/05 | 2005 | 2005 | Rs./kWh 2005 |
| Domestic | 11,988 | 13.1% | 13,558 | 24.2% | 5.64 |
| Religious | 174 | 9.1% | 190 | 0.3% | 4.62 |
| General Total | 13,424 | 11.0% | 14,895 | 26.6% | 11.88 |
| Small | 6,827 | 9.7% | 7,490 | 13.4% | 11.13 |
| Medium | 4,993 | 14.2% | 5,701 | 10.2% | 12.96 |
| Large | 1,604 | 6.2% | 1,704 | 3.0% | 12.04 |
| Industrial Total | 18,947 | 7.9% | 20,441 | 36.6% | 8.36 |
| Small | 1,207 | 5.9% | 1,278 | 2.3% | 7.71 |
| Small T.D. | 1 | 0.2% | 1 | 0.0% | 7.35 |
| Medium | 8,321 | 10.0% | 9,152 | 16.4% | 8.67 |
| Medium T.D. | 2,512 | -5.5% | 2,373 | 4.2% | 8.85 |
| Large | 5,044 | 17.4% | 5,922 | 10.6% | 7.98 |
| Large T.D. | 1,861 | -7.8% | 1,716 | 3.1% | 8.00 |
| Bulk Supply to LECO | 5,891 | 5.1% | 6,192 | 11.1% | 6.03 |
| L1 - L.T.Supply | 9 | -6.2% | 9 | 0.0% | 7.82 |
| L2 -11kV & above | 5,882 | 5.1% | 6,184 | 11.1% | 6.03 |
| Street Lighting | 651 | -0.3% | 649 | 1.2% | 7.80 |
| TOTAL | 51,076 | 9.5% | 55,927 | 100.0% | 7.71 |

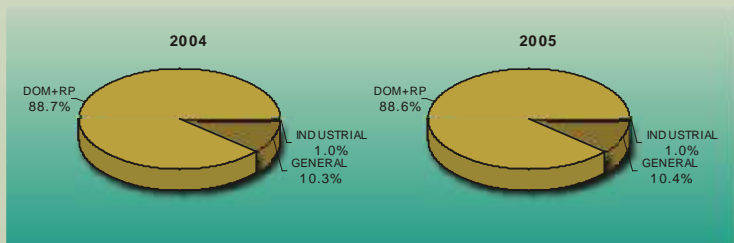
LECO ELECTRICITY SALES

| | SALES BY TARIFF IN Gwh. | | | CONSUMER ACCOUNTS BY TARIFF | | |
|------------------------------|-------------------------|------------|-----------------------|-----------------------------|----------------|-----------------------|
| | 2004 | 2005 | % Increase 2004/05 | 2004 | 2005 | % Increase 2004/05 |
| Domestic | 428 | 456 | 6.7% | 341,016 | 351,924 | 3.2% |
| Religious | 7 | 8 | 11.8% | 1,988 | 2,011 | 1.2% |
| General Total | 191 | 211 | 10.3% | 45,881 | 48,684 | 6.1% |
| Small | 132 | 141 | 7.2% | 45,527 | 48,267 | 6.0% |
| Medium | 59 | 69 | 17.2% | 354 | 417 | 17.8% |
| Hotel Total | 39 | 33 | -14.5% | 43 | 47 | 9.3% |
| Small | 0.0 | 0.0 | 5.8% | 1 | 1 | 0.0% |
| Medium+T.D | 35 | 32 | -9.1% | 40 | 44 | 10.0% |
| Large +T.D | 3 | 1 | -70.7% | 2 | 2 | 0.0% |
| Industrial Total | 225 | 240 | 6.8% | 4,104 | 4,091 | -0.3% |
| Small | 25 | 26 | 2.4% | 3,514 | 3,498 | -0.5% |
| Medium +T.D. | 189 | 200 | 5.7% | 584 | 586 | 0.3% |
| Large +T.D | 11 | 15 | 34.8% | 6 | 7 | 16.7% |
| Temporary Connections | 1 | 2 | 50.5% | 642 | 975 | 51.9% |
| Street Lighting | 22 | 23 | 4.5% | 2,151 | 2,631 | 22.3% |
| TOTAL | 912 | 973 | 6.6% | 395,825 | 410,363 | 3.7% |

C.E.B. ELECTRICITY SALES BY TARIFF



C.E.B. CONSUMER ACCOUNTS BY TARIFF



GENERAL STATISTICS

| | Units | 2004 | 2005* | Percentage Increase 2004/05 |
|---------------------------------------|----------|-----------|-----------|-----------------------------|
| Population (Mid Year) | Thous. | 19,462 | 19,668 | 1.1% |
| G.N.P. at Current Factor Cost Prices | Rs.m. | 1,780,062 | 2,068,273 | 16.2% |
| G.N.P. at Const.(1996)Fac.Cost Prices | Rs.m. | 969,421 | 1,023,209 | 5.5% |
| G.D.P. at Current Factor Cost Prices | Rs.m. | 1,800,750 | 2,098,323 | 16.5% |
| G.D.P. at Const.(1996)Fac.Cost Prices | Rs.m. | 980,720 | 1,039,735 | 6.0% |
| G.G.D.P Per Capita at Market Prices | Rs. | 104,273 | 120,282 | 15.4% |
| G.D.P Per Capita at Market Prices | U.S.\$ | 1,030 | 1,197 | 16.2% |
| CCPI Index (1952 = 100) | | 3,633 | 4,056 | 11.6% |
| G.D.P.Deflator (1996 = 100) | | 9.3 | 9.9 | |
| Area of Sri Lanka | sq.km. | 65,610 | 65,610 | |
| Average Exchange Rate | Rs/US \$ | 101.19 | 100.50 | |

*-Provisional

FUEL RATE AND THERMAL EFFICIENCY

| | Fuel Rate in Litres/kWh | | Av: Thermal Efficiency | |
|-------------------------|-------------------------|------|------------------------|-------|
| | 2004 | 2005 | 2004 | 2005 |
| K.P.S.(smallGT - L.A.D) | 0.50 | 0.53 | 19.0% | 17.7% |
| K.P.S.(new GT - L.A.D) | 0.33 | 0.34 | 28.5% | 27.7% |
| SP.P.S. - A (L.A.D.) | 0.43 | 0.50 | 21.7% | 18.9% |
| SP.P.S. - A (L.H.F.) | 0.23 | 0.23 | 40.5% | 40.5% |
| SP.P.S.- B (L.A.D.) | 0.32 | 0.37 | 29.1% | 25.8% |
| SP.P.S.- B (L.H.F.) | 0.21 | 0.22 | 43.6% | 43.2% |
| K.P.S. - C.Cy. (L.A.D.) | 0.22 | 0.22 | 42.5% | 42.2% |
| K.P.S. - C.Cy. (Naptha) | 0.26 | 0.27 | 46.7% | 46.0% |

Note:- K.P.S. - Kelanitissa Power Station. L.A.D.- Lanka Auto Diesel
 SP.P.S. - Sapugaskande Power Station. L.H.F. - Lanka Heavy Fuel.
 C.P.S. - Chunnakam Power Station. C.Cy. - Combined Cycle.
 G.T. - Gas Turbines K.K.S. - Kankasanthurai.

EXPENDITURE ON PRIVATE POWER PURCHASE - 2005

| Power Station | Total Cost M.Rs. | Av.Unit Cost Rs./kWh. |
|--------------------------------|---------------------|-----------------------------|
| Private-Thermal Total | 31604 | 10.03 |
| Asia Power | 3636 | 10.28 |
| Lakdhanavi | 1416 | 9.37 |
| Barge Mounted | 4488 | 9.43 |
| ACE - Matara | 1699 | 10.40 |
| ACE - Horana | 1729 | 9.94 |
| ACE - Embilipitiya | 4416 | 9.04 |
| Heladhanavi | 6058 | 7.98 |
| AES - KPS | 6073 | 12.77 |
| Kool Air - KKS | 988 | 17.79 |
| Aggreko - Chunnakam | 1101 | 19.81 |
| Private - Hydro Total | 1515 | 5.41 |
| Total (Thermal + Hydro) | 33119 | 9.65 |

Note:- Financial data are Provisional.

LENGTH OF TRANSMISSION AND DISTRIBUTION LINES IN km.

| | 2004 | 2005 | % Increase 2004/05 |
|---------------------------------------------|--------|--------|-----------------------|
| 220 kV Route Length O.H. | 331 | 331 | 0.0% |
| 132 kV Route Length O.H. | 1,651 | 1,675 | 1.4% |
| 132 kV Route Length U.G. | 13 | 13 | 0.0% |
| 33 kV Route Length O.H. | 18,507 | 19,661 | 6.2% |
| 33 kV Route Length U.G. | 103 | 103 | 0.0% |
| 11 kV Route Length O.H. | 1,430 | 1,655 | 15.7% |
| 11 kV Route Length U.G. | 810 | 821 | 1.4% |
| Low Voltage Circuit Length O.H.& U.G.-Total | 77,198 | 82,037 | 6.3% |
| Single Phase O.H. & U.G. | 35,020 | 36,235 | 3.5% |
| Two Phase O.H. & U.G. | 4,844 | 4,814 | -0.6% |
| Three Phase O.H. & U.G. | 37,334 | 40,988 | 9.8% |

Note:- 1. Excludes 141 route km of 132 kV transmission lines in the North due to uncertainty.
 2. Includes only distribution lines & substations rehabilitated and used from 1999 in Northern Province.

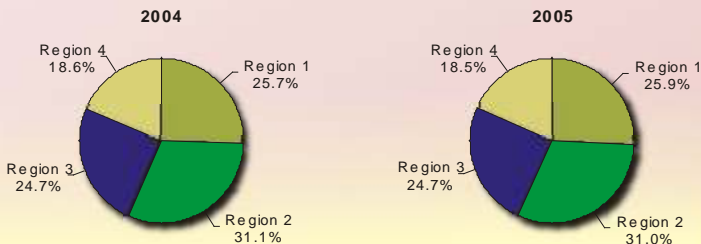
NUMBER AND CAPACITY OF SUBSTATIONS

| | Units | 2004 | 2005 | % Increase 2004/05 |
|---------------------------------------|------------|---------------|---------------|-----------------------|
| Grid S.S. (132/33 kV) | No. | 33 | 34 | 3.0% |
| Capacity | MVA | 2,150 | 2,213 | 2.9% |
| Grid S.S.(220/132/33kV) | No. | 6 | 6 | 0.0% |
| Capacity | MVA | 2205 /735 | 2205 /735 | 0.0% |
| Grid S.S.(220/132kV) | No. | 1 | 1 | 0.0% |
| Capacity | MVA | 105 | 105 | 0.0% |
| Grid S.S. (132/11 kV) | No. | 2 | 2 | 0.0% |
| Capacity | MVA | 180 | 180 | 0.0% |
| Primary S.S. (33kV/11kV & 33kV/3.3kV) | No. | 124 | 123 | -0.8% |
| Capacity | MVA | 1,077 | 1,035 | -3.9% |
| Distribution S.S.(33kV/LV & 11kV/LV) | No. | 15,480 | 16,099 | 4.0% |
| Capacity | MVA | 3,931 | 4,055 | 3.2% |
| Total number of substations | No. | 15,646 | 16,265 | 4.0% |
| Total Capacity | MVA | 10,383 | 10,528 | 1.4% |

RURAL ELECTRIFICATION SCHEMES COMPLETED

| YEAR | No. of Schemes | Total at End of the year |
|------|----------------|--------------------------|
| 1999 | 319 | 15,010 |
| 2000 | 336 | 15,346 |
| 2001 | 211 | 15,557 |
| 2002 | 227 | 15,784 |
| 2003 | 336 | 16,120 |
| 2004 | 344 | 16,464 |
| 2005 | 339 | 16,803 |

NO.OF CONSUMER ACCOUNTS BY DISTRIBUTION REGIONS - CEB

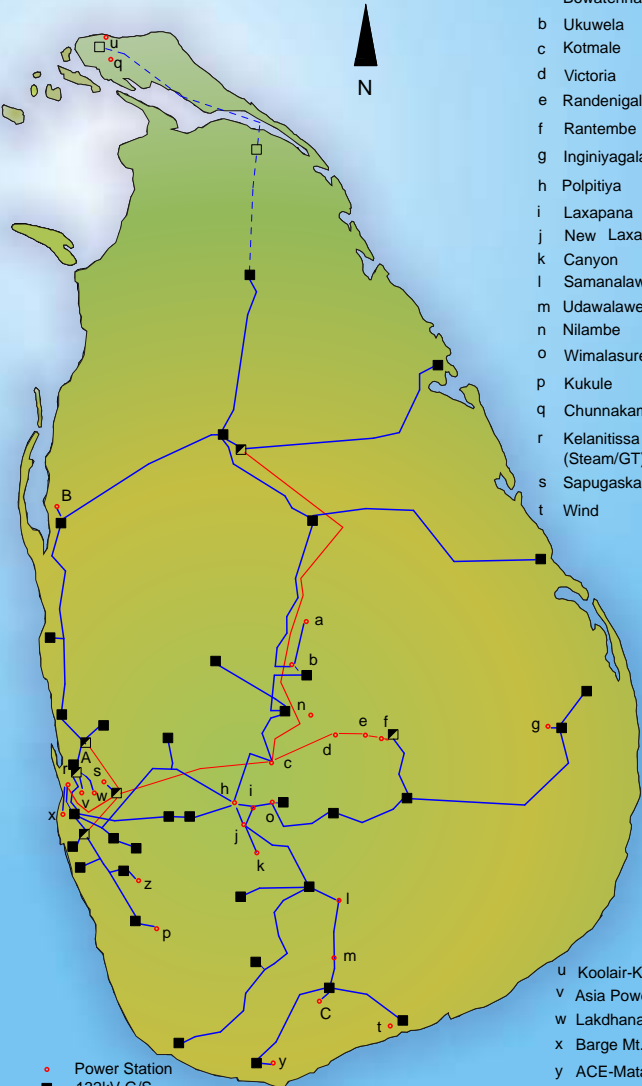


C.E.B. TARIFF - EFFECTIVE FROM 01.04.2002
(with amendment effect from 01/08/2002)

| | | | | |
|------------------------------------------------------------------------------------------------------------------------------------------------------------------------------------------|------------------------|---------------------------|-----------------------------------------------------|---------------------------|
| DOMESTIC | | | | |
| - First 30 units @ Rs 3.00 per unit 31 - 60 units @ Rs 3.70 per unit 61 - 90 units @ Rs 4.10 per unit 91 - 180 units @ Rs 10.60 per unit Above 180 units @ Rs 15.80 per unit | | | | |
| Monthly Fixed Charge - Rs 30.00 per month | | | | |
| RELIGIOUS & CHARITABLE INSTITUTIONS:- | | | | |
| First 30 units @ Rs 2.50 per unit 31 - 90 units @ Rs 2.70 per unit 91 - 180 units @ Rs 4.00 per unit Above 180 units @ Rs.7.20 per unit | | | | |
| Monthly Fixed Charge - Rs 30.00 per month | | | | |
| OTHER CATEGORIES | General purpose | Industrial purpose | Industrial purpose (Time of day) | Industrial Standby |
| Supply at 400/230V Contract demand less than 42 kVA | | | | |
| Unit Charge (Rs/unit) | 10.90 | 7.50 | off peak 6.90 peak (7 pm to 10 pm) 15.00 | |
| Fixed Charge(Rs./Month) Upto 10 kVA | 30.00 | 30.00 | 30.00 | |
| | + | + | + | |
| Fixed Charge(Rs./Month) above 10 kVA | 230.00 | 230.00 | 230.00 | |
| | or | or | or | |
| | 230.00 | 230.00 | 230.00 | |
| Supply at 400/230V Contract demand 42 kVA and above | | | | |
| Unit Charge (Rs/unit) | 10.80 | 7.10 | off peak 6.50 + peak (7 pm to 10 pm) 14.70 | 7.10 |
| Demand Charge (Rs/kVA) | 480.00 | 400.00 | 380.00 | 100.00 [CD] |
| Fixed Charge(Rs./Month) | 800.00 | 800.00 | 800.00 | 800.00 |
| | + | + | + | + |
| | 800.00 | 800.00 | 800.00 | 800.00 |
| Supply at 11/33/132 kV | | | | |
| Unit Charge (Rs/unit) | 10.70 | 7.00 | off peak 6.10 peak (7 pm to 10 pm) 14.00 | 7.00 |
| Demand Charge (Rs/kVA) | 460.00 | 380.00 | 360.00 | 90.00 [CD] |
| Fixed Charge(Rs./Month) | 800.00 | 800.00 | 800.00 | 800.00 |
| | + | + | + | + |
| | 800.00 | 800.00 | 800.00 | 800.00 |
| Bulk Supplies to LECO | | | | |
| | Unit Charge | | Demand Charge | |
| | Rs/unit | | Rs/kVA | |
| L1 - Supply at 400/230 V | 7.20 | + | 240.00 | |
| L2 - Supply at 11kV & above | 5.40 | + | 220.00 | |
| Street Lighting | @ Rs 7.80 per unit | | | |

CD - Contract Demand.

POWER TRANSMISSION SYSTEM IN THE YEAR 2005



- a Bowatenna
- b Ukuwela
- c Kotmale
- d Victoria
- e Randenigala
- f Rantembe
- g Inginiyagala
- h Polpitiya
- i Laxapana
- j New Laxapana
- k Canyon
- l Samanalawewa
- m Udawalawe
- n Nilambe
- o Wimalasurendra
- p Kukule
- q Chunnakam
- r Kelanitissa C.Cy. (Steam/GT)
- s Sapugaskanda
- t Wind

- Power Station
- 132kV G/S
- ▣ 220/132kV G/S
- 132kV Line
- 220kV Line
- - - □ Not Operative

- u Koolair-KKS
- v Asia Power
- w Lakdhanavi
- x Barge Mt.
- y ACE-Matara
- z ACE-Horana
- A AES-KPS C.Cy. (Steam/GT)
- B Heladhanavi
- C ACE-Embilipitiya